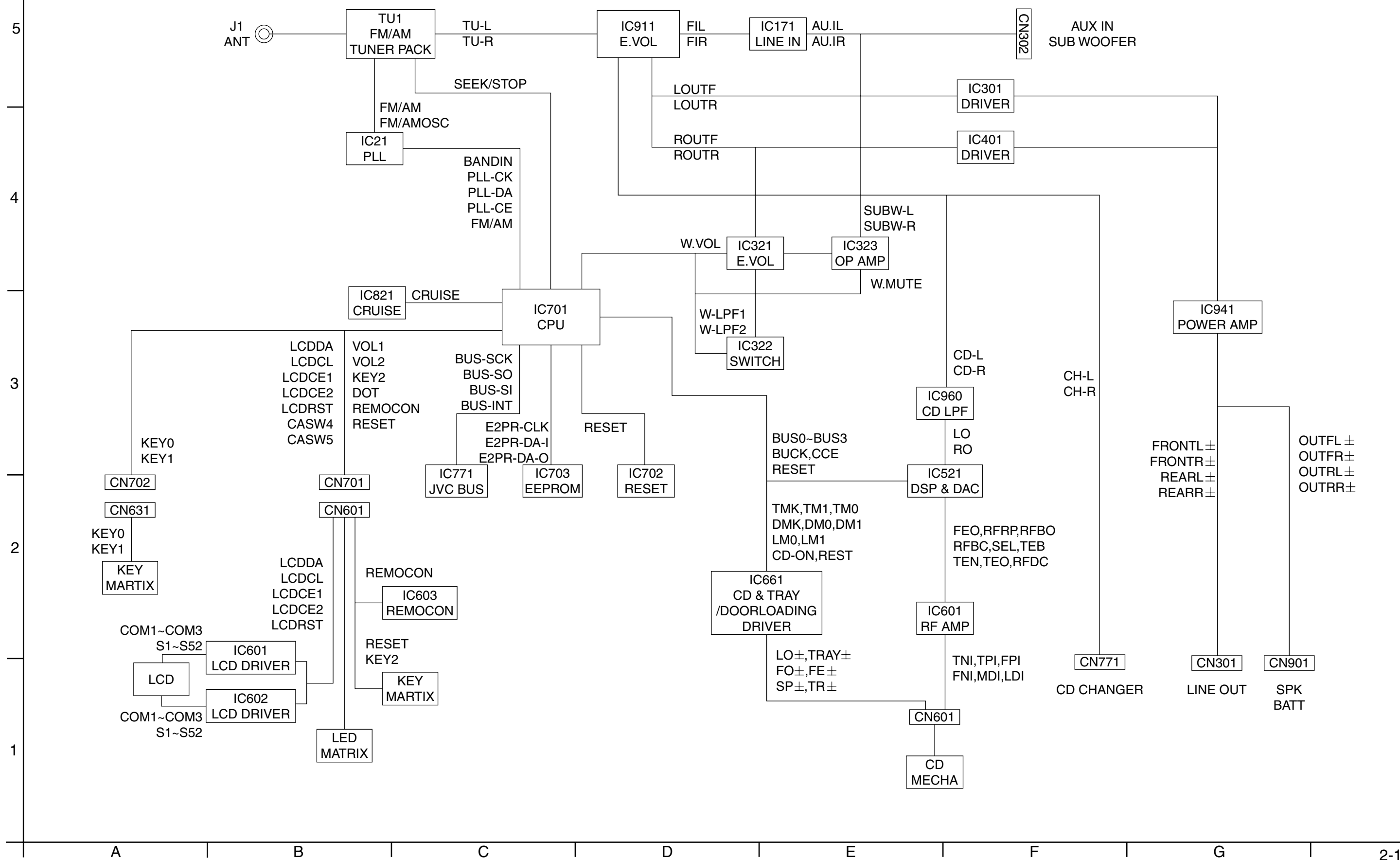
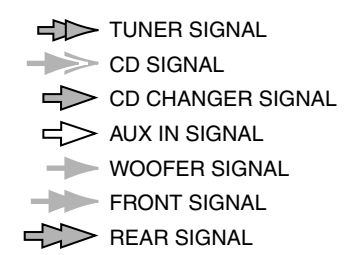


## Block diagram

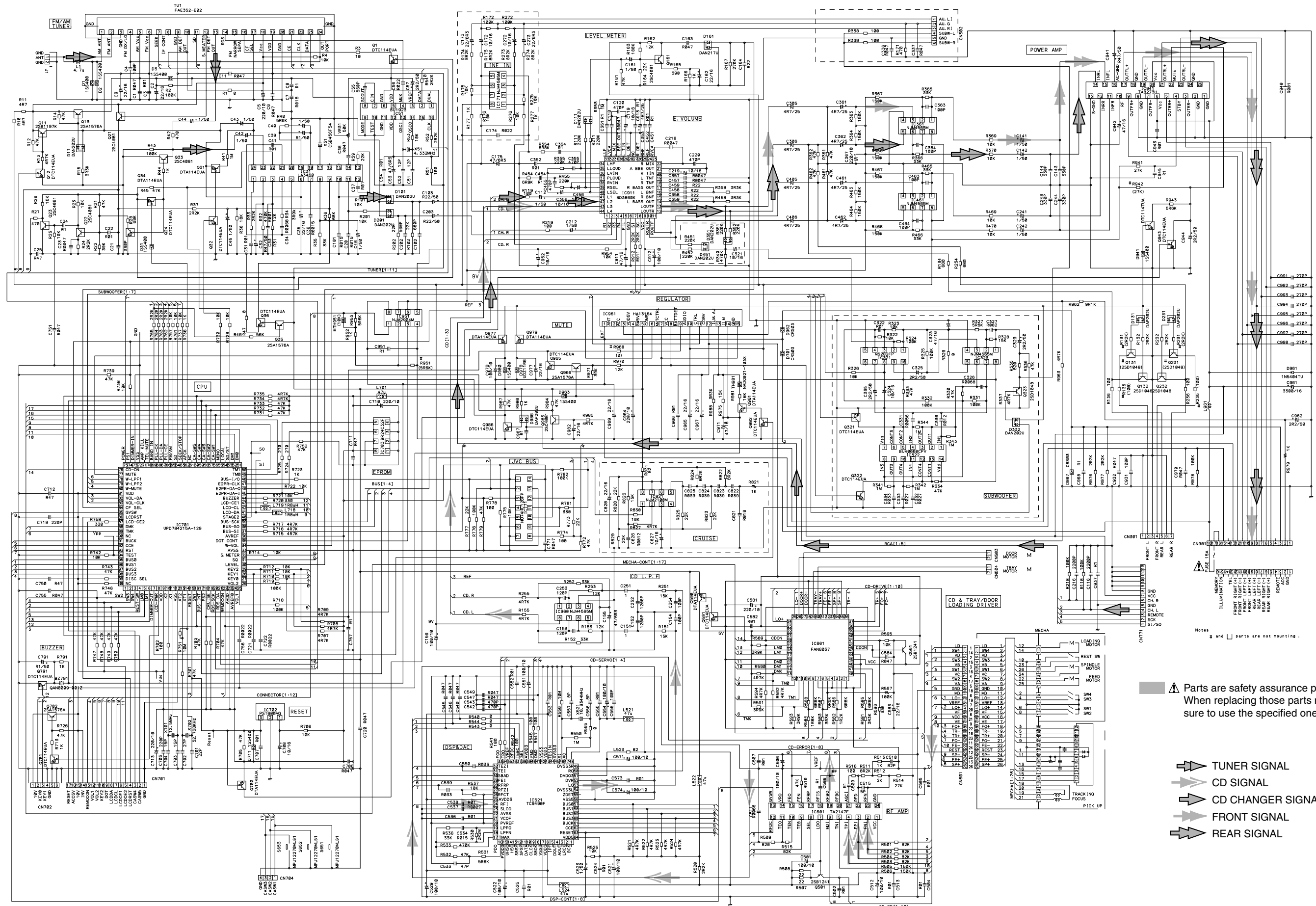


## ■ KD-LX330R



■ KD-LX110R

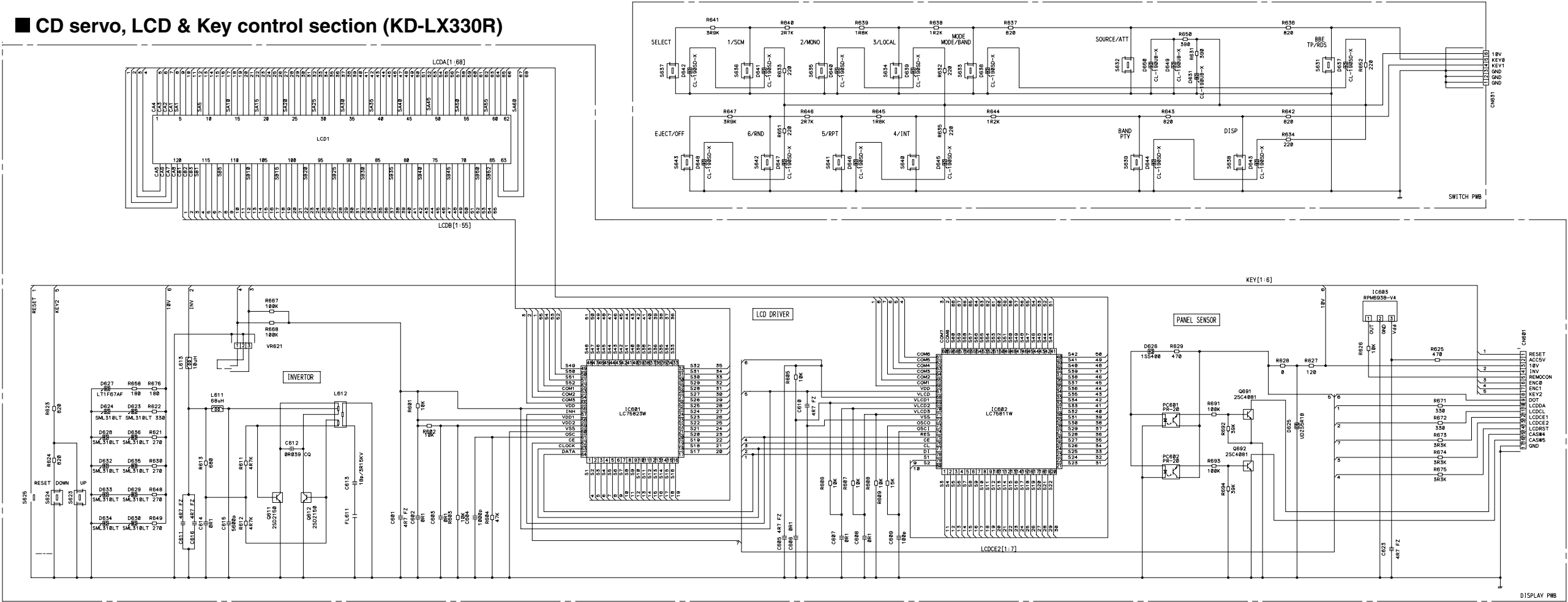
5  
4  
3  
2  
1



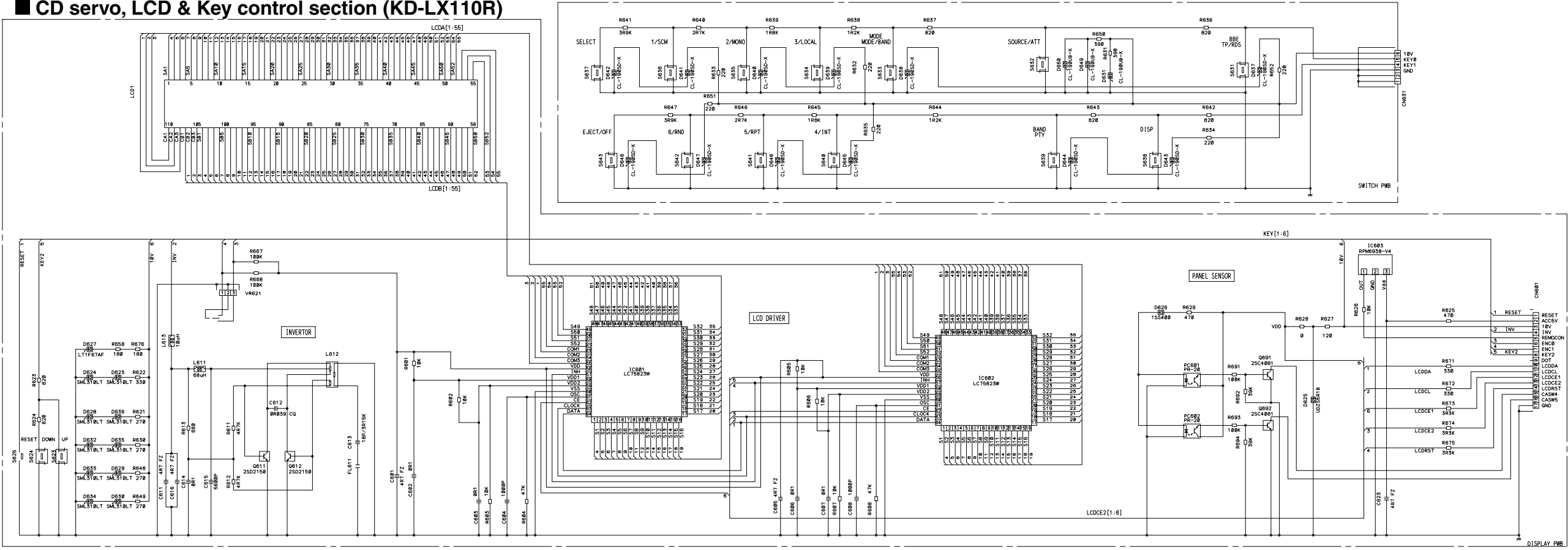
▲ Parts are safety assurance parts.  
When replacing those parts make  
sure to use the specified one.

- ➡ TUNER SIGNAL
- ➡ CD SIGNAL
- ➡ CD CHANGER SIGNAL
- ➡ FRONT SIGNAL
- ➡ REAR SIGNAL

CD servo, LCD & Key control section (KD-LX330R)



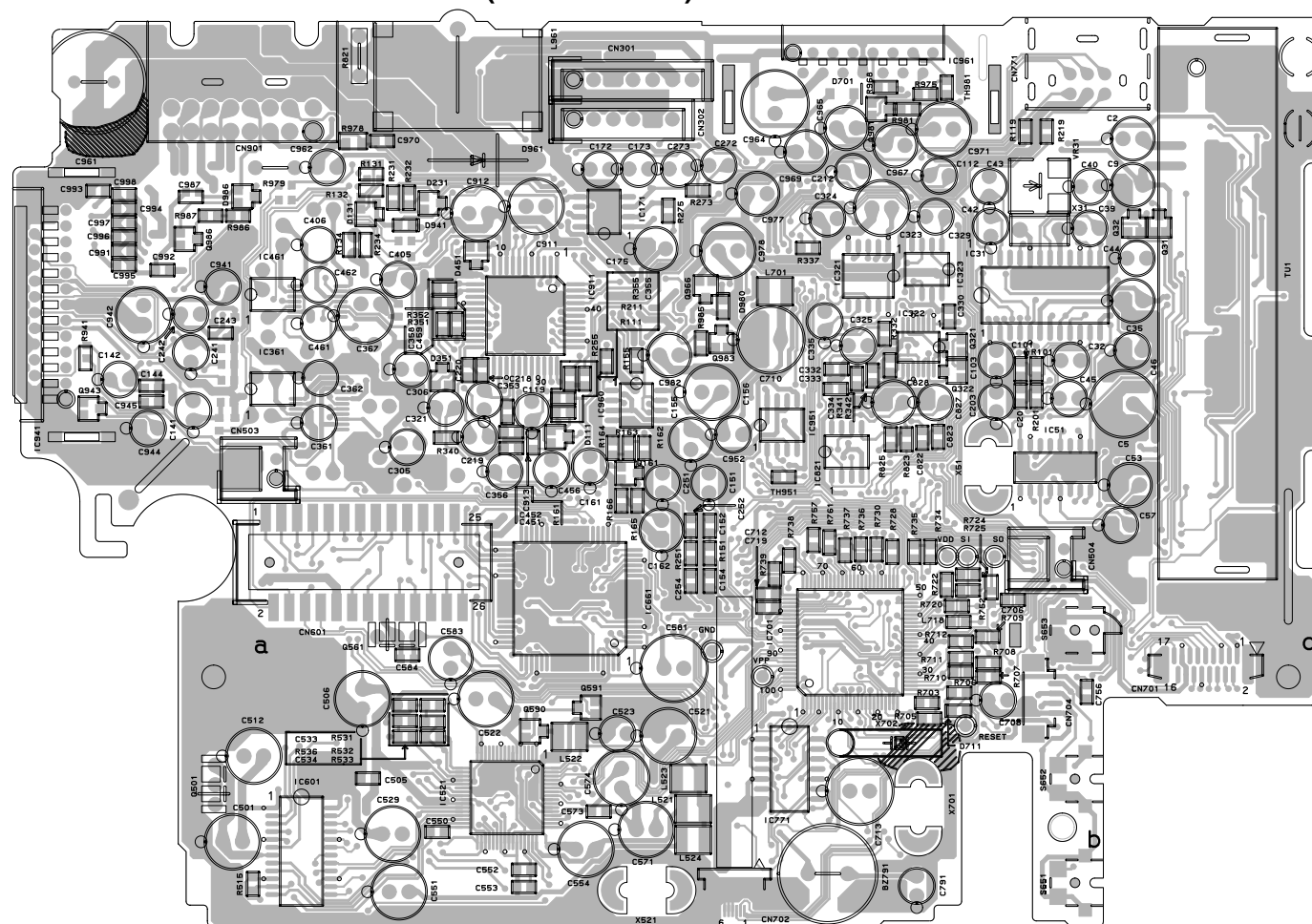
CD servo, LCD & Key control section (KD-LX110R)



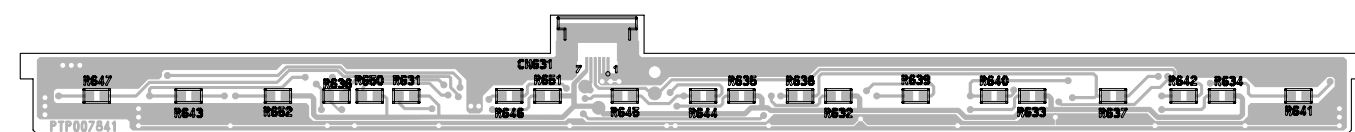


## Printed circuit boards

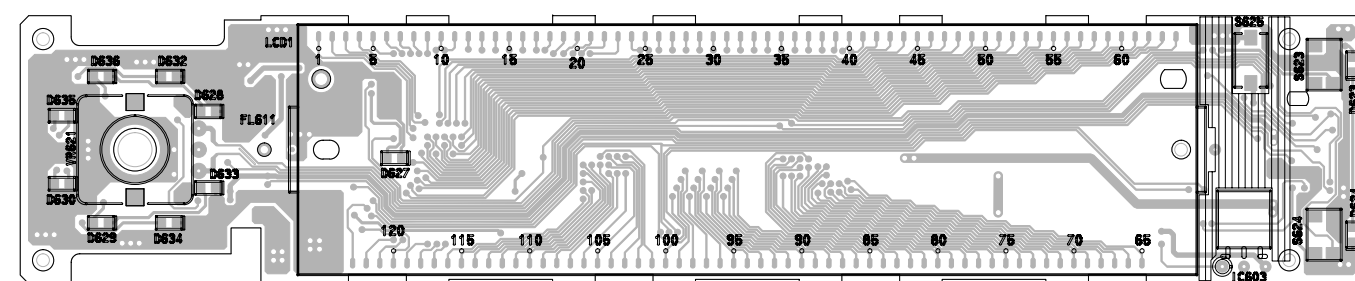
### ■ KD-LX330R Main board (Forward side)



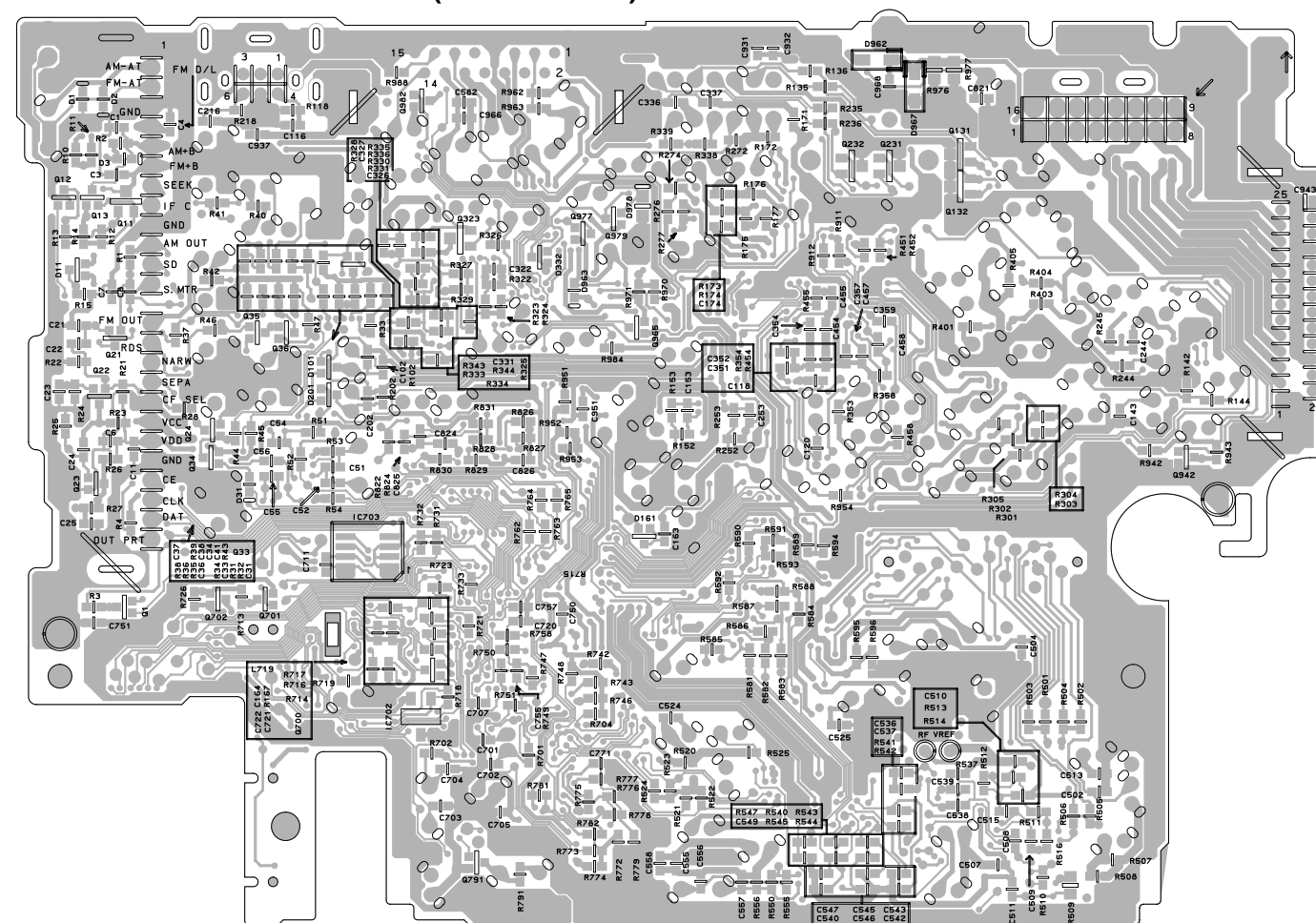
### ■ KD-LX330R Switch board (Forward side)



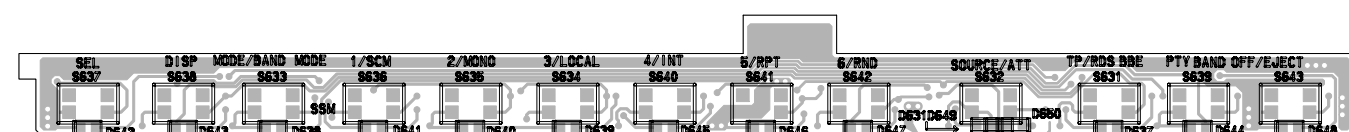
### ■ KD-LX330R Front board (Forward side)



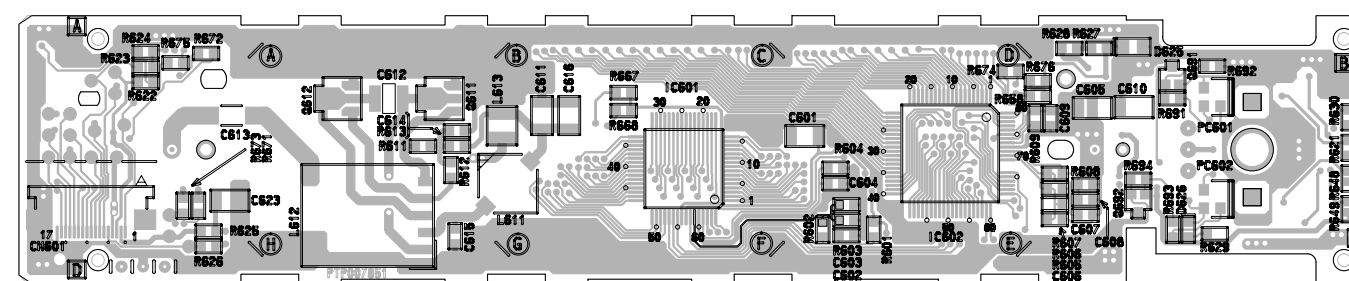
### ■ KD-LX330R Main board (Reverse side)



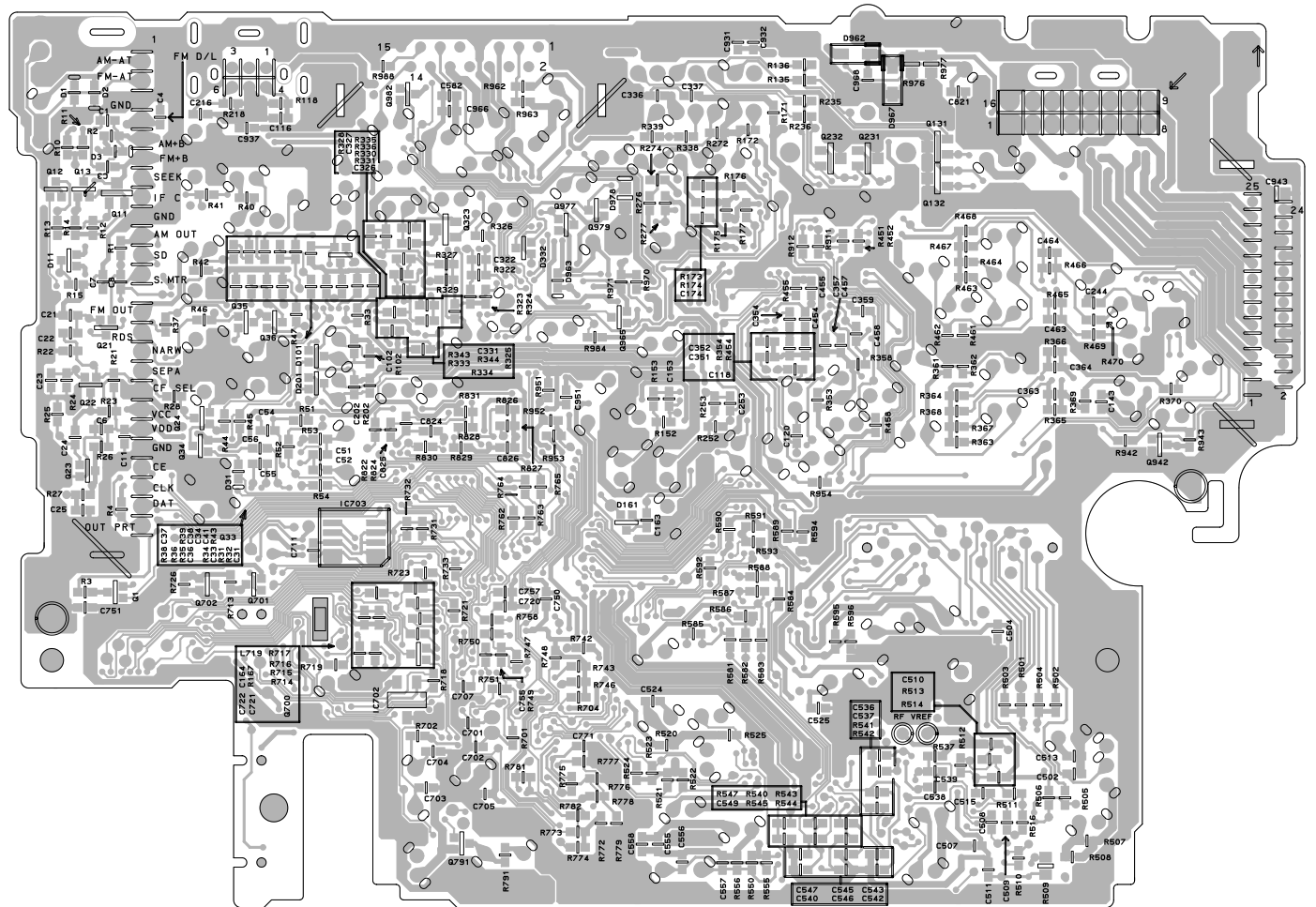
### ■ KD-LX330R Switch board (Reverse side)



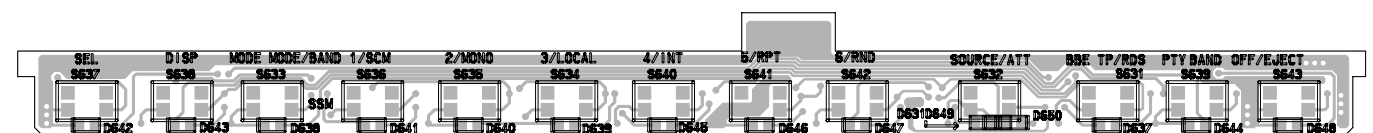
### ■ KD-LX330R Front board (Reverse side)



### ■ KD-LX110R Main board (Reverse side)



### ■ KD-LX110R Switch board (Reverse side)



### ■ KD-LX110R Front board (Reverse side)

